

# ACROPOLE

## Porte tarauds & filières Taps & dies tool holders



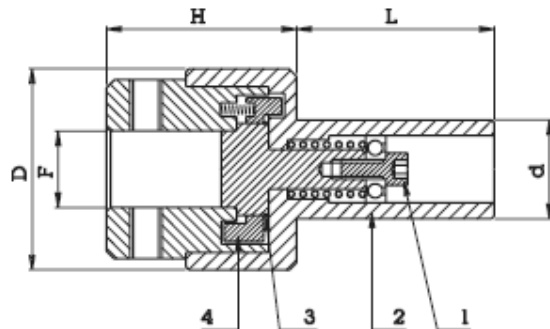
369 rue des Abeilles  
PAE Les Léchères  
74460 Marnaz  
France

**Tel : +33 (0)4 50 18 20 43**  
**Fax : +33 (0)4 50 96 03 60**

e-mail : [acropole@acropole.fr](mailto:acropole@acropole.fr)  
web : [www.acropole.fr](http://www.acropole.fr)

## Porte taraud à déclenchement type 180 - Releasing tap holder type 180

| Code    |       |    |    |    |    |   |
|---------|-------|----|----|----|----|---|
| ART.    | d     | L  | H  | D  | F  | C |
| 180.219 | 19.05 | 50 | 44 | 51 | 18 | 4 |
| 180.220 | 20    | 50 | 44 | 51 | 18 | 4 |
| 180.222 | 22    | 50 | 44 | 51 | 18 | 4 |
| 180.225 | 25    | 50 | 44 | 51 | 18 | 4 |
| 180.226 | 25.40 | 50 | 44 | 51 | 18 | 4 |
| 180.230 | 30    | 50 | 44 | 51 | 18 | 4 |
| 180.231 | 31.75 | 50 | 44 | 51 | 18 | 4 |
| 180.232 | 32    | 50 | 44 | 51 | 18 | 4 |
|         |       |    |    |    |    |   |
| 180.322 | 22    | 50 | 54 | 51 | 25 | 4 |
| 180.325 | 25    | 50 | 54 | 51 | 25 | 4 |
| 180.326 | 25.40 | 50 | 54 | 51 | 25 | 4 |
| 180.330 | 30    | 50 | 54 | 51 | 25 | 4 |
| 180.331 | 31.75 | 50 | 54 | 51 | 25 | 4 |
| 180.332 | 32    | 50 | 54 | 51 | 25 | 4 |

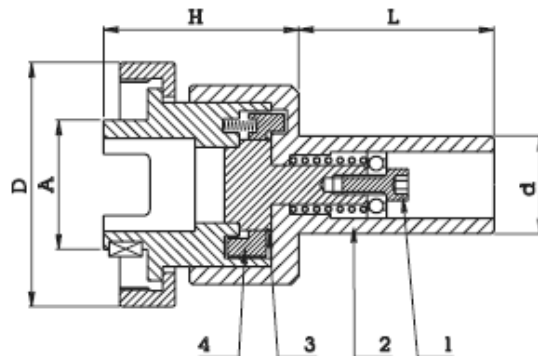


C= Course de compensation axial avant déclenchement

C= Length compensation's stroke (only expansion) before to arrive at releasing point

## Porte filière à déclenchement type 180 - Releasing die holder type 180

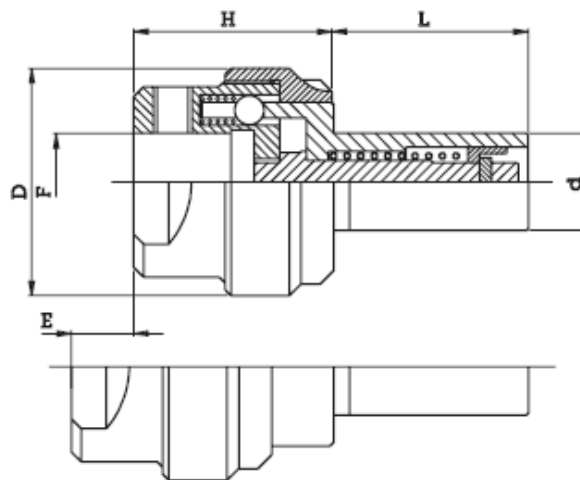
| Code    |       |    |    |    |    |   | Die holder bush code |
|---------|-------|----|----|----|----|---|----------------------|
| ART.    | d     | L  | H  | D  | A  | C | art. cappelotto      |
| 200.219 | 19.05 | 50 | 46 | 57 | 32 | 4 | 220...               |
| 200.220 | 20    | 50 | 46 | 57 | 32 | 4 | 220...               |
| 200.222 | 22    | 50 | 46 | 57 | 32 | 4 | 220...               |
| 200.225 | 25    | 50 | 46 | 57 | 32 | 4 | 220...               |
| 200.226 | 25.40 | 50 | 46 | 57 | 32 | 4 | 220...               |
| 200.230 | 30    | 50 | 46 | 57 | 32 | 4 | 220...               |
| 200.231 | 31.75 | 50 | 46 | 57 | 32 | 4 | 220...               |
| 200.232 | 32    | 50 | 46 | 57 | 32 | 4 | 220...               |
|         |       |    |    |    |    |   |                      |
| 200.322 | 22    | 50 | 51 | 71 | 45 | 4 | 230...               |
| 200.325 | 25    | 50 | 51 | 71 | 45 | 4 | 230...               |
| 200.326 | 25.40 | 50 | 51 | 71 | 45 | 4 | 230...               |
| 200.330 | 30    | 50 | 51 | 71 | 45 | 4 | 230...               |
| 200.331 | 31.75 | 50 | 51 | 71 | 45 | 4 | 230...               |
| 200.332 | 32    | 50 | 51 | 71 | 45 | 4 | 230...               |



C= Course de compensation axial avant déclenchement

C= Length compensation's stroke (only expansion) before to arrive at releasing point

**Porte taraud flottant avec extraction type 190 - Floating tap holder with extension type 190**



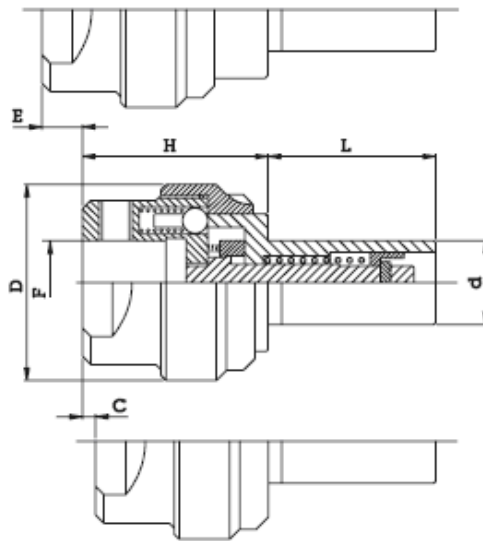
**E= Course de l'extention**  
*E= Extension stroke*

| Code     |        |    |    |    |    |    |
|----------|--------|----|----|----|----|----|
| ART.     | d      | L  | H  | D  | E  | F  |
| 190.115  | 15.875 | 32 | 29 | 29 | 8  | 10 |
| 190.116  | 16     | 32 | 29 | 29 | 8  | 10 |
| 190.119  | 19.05  | 32 | 29 | 29 | 8  | 10 |
| 190.120  | 20     | 32 | 29 | 29 | 8  | 10 |
|          |        |    |    |    |    |    |
| 190.219  | 19.05  | 46 | 40 | 44 | 12 | 12 |
| 190.219B | 19.05  | 46 | 40 | 44 | 12 | 11 |
| 190.220  | 20     | 46 | 40 | 44 | 12 | 12 |
| 190.222  | 22     | 46 | 40 | 44 | 12 | 12 |
| 190.225  | 25     | 46 | 40 | 44 | 12 | 12 |
| 190.226  | 25.40  | 46 | 40 | 44 | 12 | 12 |
|          |        |    |    |    |    |    |
| 190.325  | 25     | 50 | 52 | 58 | 16 | 18 |
| 190.325L | 25     | 80 | 52 | 58 | 16 | 18 |
| 190.326  | 25.40  | 50 | 52 | 58 | 16 | 18 |
| 190.326L | 25.40  | 80 | 52 | 58 | 16 | 18 |
| 190.330  | 30     | 50 | 52 | 58 | 16 | 18 |
| 190.331  | 31.75  | 50 | 52 | 58 | 16 | 18 |
| 190.332  | 32     | 50 | 52 | 58 | 16 | 18 |
| 190.340  | 40     | 85 | 52 | 58 | 16 | 18 |

| Code     |       |    |    |    |    |    |
|----------|-------|----|----|----|----|----|
| ART.     | d     | L  | H  | D  | E  | F  |
| 190.425  | 25    | 50 | 52 | 58 | 16 | 21 |
| 190.426  | 25.40 | 50 | 52 | 58 | 16 | 21 |
| 190.430  | 30    | 50 | 52 | 58 | 16 | 21 |
| 190.431  | 31.75 | 50 | 52 | 58 | 16 | 21 |
| 190.432  | 32    | 50 | 52 | 58 | 16 | 21 |
| 190.440  | 40    | 85 | 52 | 58 | 16 | 21 |
|          |       |    |    |    |    |    |
| 190.525  | 25    | 50 | 52 | 58 | 16 | 25 |
| 190.525L | 25    | 80 | 52 | 58 | 16 | 25 |
| 190.526  | 25.40 | 50 | 52 | 58 | 16 | 25 |
| 190.526L | 25.40 | 80 | 52 | 58 | 16 | 25 |
| 190.530  | 30    | 50 | 52 | 58 | 16 | 25 |
| 190.531  | 31.75 | 50 | 52 | 58 | 16 | 25 |
| 190.532  | 32    | 50 | 52 | 58 | 16 | 25 |
| 190.540  | 40    | 85 | 52 | 58 | 16 | 25 |

## Porte taraud flottant avec extraction & compression type 190 Floating tap holder with extension & compression type 190

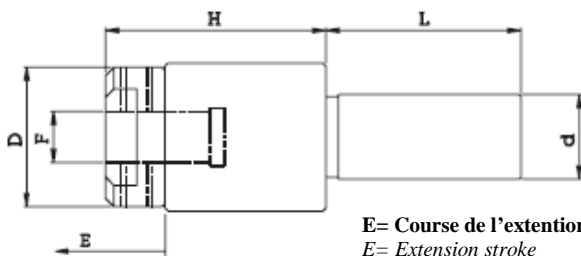
| Code      |        |    |    |    |     |      |    |
|-----------|--------|----|----|----|-----|------|----|
| ART.      | d      | L  | H  | D  | E   | C    | F  |
| 190.115A  | 15.875 | 32 | 29 | 29 | 5.5 | -2.5 | 10 |
| 190.116A  | 16     | 32 | 29 | 29 | 5.5 | -2.5 | 10 |
| 190.119A  | 19.05  | 32 | 29 | 29 | 5.5 | -2.5 | 10 |
| 190.120A  | 20     | 32 | 29 | 29 | 5.5 | -2.5 | 10 |
|           |        |    |    |    |     |      |    |
| 190.219A  | 19.05  | 46 | 43 | 44 | 9   | -3   | 12 |
| 190.220A  | 20     | 46 | 43 | 44 | 9   | -3   | 12 |
| 190.222A  | 22     | 46 | 43 | 44 | 9   | -3   | 12 |
| 190.225A  | 25     | 46 | 43 | 44 | 9   | -3   | 12 |
| 190.226A  | 25.40  | 46 | 43 | 44 | 9   | -3   | 12 |
|           |        |    |    |    |     |      |    |
| 190.325A  | 25     | 50 | 56 | 58 | 12  | -4   | 18 |
| 190.325AL | 25     | 80 | 56 | 58 | 12  | -4   | 18 |
| 190.326A  | 25.40  | 50 | 56 | 58 | 12  | -4   | 18 |
| 190.326AL | 25.40  | 80 | 56 | 58 | 12  | -4   | 18 |
| 190.330A  | 30     | 50 | 56 | 58 | 12  | -4   | 18 |
| 190.331A  | 31.75  | 50 | 56 | 58 | 12  | -4   | 18 |
| 190.332A  | 32     | 50 | 56 | 58 | 12  | -4   | 18 |
| 190.340A  | 40     | 85 | 56 | 58 | 12  | -4   | 18 |
|           |        |    |    |    |     |      |    |
| 190.425A  | 25     | 50 | 56 | 58 | 12  | -4   | 21 |
| 190.426A  | 25.40  | 50 | 56 | 58 | 12  | -4   | 21 |
| 190.430A  | 30     | 50 | 56 | 58 | 12  | -4   | 21 |
| 190.431A  | 31.75  | 50 | 56 | 58 | 12  | -4   | 21 |
| 190.432A  | 32     | 50 | 56 | 58 | 12  | -4   | 21 |
| 190.440A  | 40     | 85 | 56 | 58 | 12  | -4   | 21 |
|           |        |    |    |    |     |      |    |
| 190.525A  | 25     | 50 | 56 | 58 | 12  | -4   | 25 |
| 190.525AL | 25     | 80 | 56 | 58 | 12  | -4   | 25 |
| 190.526A  | 25.40  | 50 | 56 | 58 | 12  | -4   | 25 |
| 190.526AL | 25.40  | 80 | 56 | 58 | 12  | -4   | 25 |
| 190.530A  | 30     | 50 | 56 | 58 | 12  | -4   | 25 |
| 190.531A  | 31.75  | 50 | 56 | 58 | 12  | -4   | 25 |
| 190.532A  | 32     | 50 | 56 | 58 | 12  | -4   | 25 |
| 190.540A  | 40     | 85 | 56 | 58 | 12  | -4   | 25 |



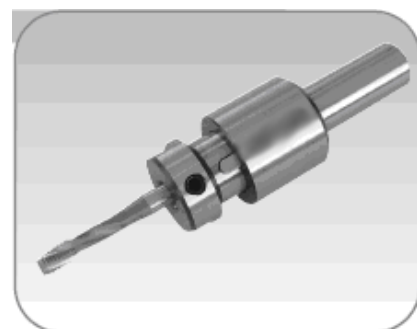
**E= Course de l'extention**  
E= Extension stroke

**C= Course de la compression**  
C= Compression stroke

## Porte taraud flottant avec extraction & compression type 191 Floating tap holder with extension & compression type 191



**E= Course de l'extention**  
E= Extension stroke

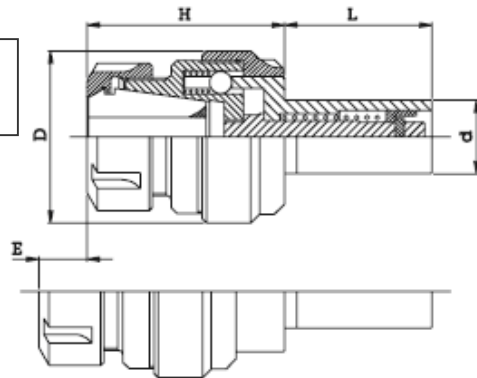


| Code    |       |    |    |    |    |    |
|---------|-------|----|----|----|----|----|
| ART.    | d     | H  | L  | D  | F  | E  |
| 191.216 | 16    | 48 | 46 | 35 | 12 | 22 |
| 191.219 | 19.05 | 48 | 46 | 35 | 12 | 22 |
| 191.220 | 20    | 48 | 46 | 35 | 12 | 22 |
| 191.222 | 22    | 48 | 46 | 35 | 12 | 22 |

| Code     |       |    |    |    |    |    |
|----------|-------|----|----|----|----|----|
| ART.     | d     | H  | L  | D  | F  | E  |
| 191.216L | 16    | 56 | 46 | 35 | 12 | 30 |
| 191.326  | 25.40 | 60 | 80 | 45 | 18 | 30 |

## Porte taraud flottant avec extraction type 192 - Floating tap holder with extension type 192

Pince DIN 6499B  
Collet DIN 6499B



**E= Course de l'extention**  
*E= Extension stroke*

**H= Mesure avec la pince**  
*H= Measure with collet*

| Code     |        |    |    |    | Collet code |    |
|----------|--------|----|----|----|-------------|----|
| ART.     | d      | L  | H  | D  | art. pinza  | E  |
| 192.715  | 15.875 | 32 | 36 | 29 | 050.011     | 8  |
| 192.716  | 16     | 32 | 36 | 29 | 050.011     | 8  |
| 192.719  | 19.05  | 32 | 36 | 29 | 050.011     | 8  |
| 192.720  | 20     | 32 | 36 | 29 | 050.011     | 8  |
|          |        |    |    |    |             |    |
| 192.015  | 15.875 | 32 | 48 | 29 | 050.016     | 8  |
| 192.016  | 16     | 32 | 48 | 29 | 050.016     | 8  |
| 192.019  | 19.05  | 32 | 48 | 29 | 050.016     | 8  |
| 192.020  | 20     | 32 | 48 | 29 | 050.016     | 8  |
|          |        |    |    |    |             |    |
| 192.219  | 19.05  | 46 | 56 | 44 | 050.020     | 12 |
| 192.220  | 20     | 46 | 56 | 44 | 050.020     | 12 |
| 192.222  | 22     | 46 | 56 | 44 | 050.020     | 12 |
| 192.225  | 25     | 46 | 56 | 44 | 050.020     | 12 |
| 192.226  | 25.40  | 46 | 56 | 44 | 050.020     | 12 |
|          |        |    |    |    |             |    |
| 192.419  | 19.05  | 46 | 70 | 44 | 050.025     | 12 |
| 192.420  | 20     | 46 | 70 | 44 | 050.025     | 12 |
| 192.422  | 22     | 46 | 70 | 44 | 050.025     | 12 |
|          |        |    |    |    |             |    |
| 192.325  | 25     | 50 | 64 | 58 | 050.025     | 16 |
| 192.325L | 25     | 80 | 64 | 58 | 050.025     | 16 |
| 192.326  | 25.40  | 50 | 64 | 58 | 050.025     | 16 |
| 192.326L | 25.40  | 80 | 64 | 58 | 050.025     | 16 |
| 192.330  | 30     | 50 | 64 | 58 | 050.025     | 16 |
| 192.331  | 31.75  | 50 | 64 | 58 | 050.025     | 16 |
| 192.332  | 32     | 50 | 64 | 58 | 050.025     | 16 |
| 192.340  | 40     | 85 | 64 | 58 | 050.025     | 16 |
|          |        |    |    |    |             |    |
| 192.525  | 25     | 50 | 66 | 58 | 050.032     | 16 |
| 192.525L | 25     | 80 | 66 | 58 | 050.032     | 16 |
| 192.526  | 25.40  | 50 | 66 | 58 | 050.032     | 16 |
| 192.526L | 25.40  | 80 | 66 | 58 | 050.032     | 16 |
| 192.530  | 30     | 50 | 66 | 58 | 050.032     | 16 |
| 192.531  | 31.75  | 50 | 66 | 58 | 050.032     | 16 |
| 192.532  | 32     | 50 | 64 | 58 | 050.032     | 16 |
| 192.540  | 40     | 85 | 64 | 58 | 050.032     | 16 |

ERC 11

ERC 16

ERC 20

ERC 25

ERC 25

ERC 32

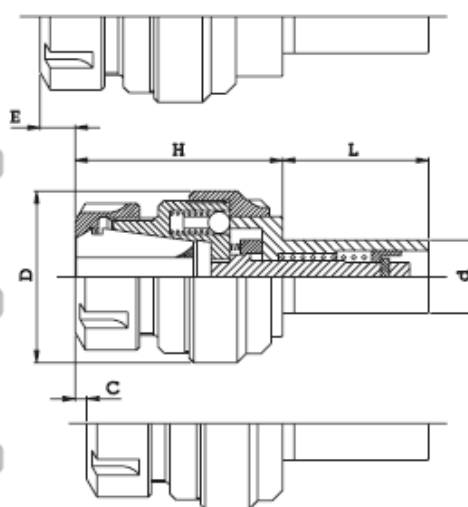
## Porte taraud flottant avec extraction & compression Floating tap holder with extension & compression

Pince DIN 6499B  
Collet DIN 6499B



| Code     | Collet code |    |    |    |            |     |      |
|----------|-------------|----|----|----|------------|-----|------|
| ART.     | d           | L  | H  | D  | art. pinza | E   | C    |
| 192.715A | 15.875      | 32 | 36 | 29 | 050.011    | 5.5 | -2.5 |
| 192.716A | 16          | 32 | 36 | 29 | 050.011    | 5.5 | -2.5 |
| 192.719A | 19.05       | 32 | 36 | 29 | 050.011    | 5.5 | -2.5 |
| 192.720A | 20          | 32 | 36 | 29 | 050.011    | 5.5 | -2.5 |
| 192.015A | 15.875      | 32 | 48 | 29 | 050.016    | 5.5 | -2.5 |
| 192.016A | 16          | 32 | 48 | 29 | 050.016    | 5.5 | -2.5 |
| 192.019A | 19.05       | 32 | 48 | 29 | 050.016    | 5.5 | -2.5 |
| 192.020A | 20          | 32 | 48 | 29 | 050.016    | 5.5 | -2.5 |
| 192.219A | 19.05       | 46 | 59 | 44 | 050.020    | 9   | -3   |
| 192.220A | 20          | 46 | 59 | 44 | 050.020    | 9   | -3   |
| 192.222A | 22          | 46 | 59 | 44 | 050.020    | 9   | -3   |
| 192.225A | 25          | 46 | 59 | 44 | 050.020    | 9   | -3   |
| 192.226A | 25.40       | 46 | 59 | 44 | 050.020    | 9   | -3   |

|           |       |    |    |    |         |    |    |
|-----------|-------|----|----|----|---------|----|----|
| 192.419A  | 19.05 | 46 | 73 | 44 | 050.025 | 9  | -3 |
| 192.420A  | 20    | 46 | 73 | 44 | 050.025 | 9  | -3 |
| 192.422A  | 22    | 46 | 73 | 44 | 050.025 | 9  | -3 |
| 192.325A  | 25    | 50 | 68 | 58 | 050.025 | 12 | -4 |
| 192.325AL | 25    | 80 | 68 | 58 | 050.025 | 12 | -4 |
| 192.326A  | 25.40 | 50 | 68 | 58 | 050.025 | 12 | -4 |
| 192.326AL | 25.40 | 80 | 68 | 58 | 050.025 | 12 | -4 |
| 192.330A  | 30    | 50 | 68 | 58 | 050.025 | 12 | -4 |
| 192.331A  | 31.75 | 50 | 68 | 58 | 050.025 | 12 | -4 |
| 192.332A  | 32    | 50 | 68 | 58 | 050.025 | 12 | -4 |
| 192.340A  | 40    | 85 | 68 | 58 | 050.025 | 12 | -4 |
| 192.525A  | 25    | 50 | 70 | 58 | 050.032 | 12 | -4 |
| 192.525AL | 25    | 80 | 70 | 58 | 050.032 | 12 | -4 |
| 192.526A  | 25.40 | 50 | 70 | 58 | 050.032 | 12 | -4 |
| 192.526AL | 25.40 | 80 | 70 | 58 | 050.032 | 12 | -4 |
| 192.530A  | 30    | 50 | 70 | 58 | 050.032 | 12 | -4 |
| 192.531A  | 31.75 | 50 | 70 | 58 | 050.032 | 12 | -4 |
| 192.532A  | 32    | 50 | 70 | 58 | 050.032 | 12 | -4 |
| 192.540A  | 40    | 85 | 70 | 58 | 050.032 | 12 | -4 |



**E= Course de l'extention**  
*E= Extension stroke*

**H= Mesure avec la pince**  
*H= Measure with collet*

ERC 25

ERC 25

ERC 32

## Porte taraud flottant avec extension type 194 - Floating tap holder with extension type 194

| Code        |        |    |    |    | Collet code |    |
|-------------|--------|----|----|----|-------------|----|
| ART.        | d      | L  | H  | D  | art. pinza  | E  |
| 194.715 040 | 15.875 | 40 | 21 | 16 | 050.011     | 10 |
| 194.716 040 | 16     | 40 | 21 | 16 | 050.011     | 10 |
| 194.719 040 | 19.05  | 40 | 21 | 16 | 050.011     | 10 |
| 194.720 040 | 20     | 40 | 21 | 16 | 050.011     | 10 |
| 194.722 040 | 22     | 40 | 21 | 16 | 050.011     | 10 |
| 194.725 040 | 25     | 40 | 21 | 16 | 050.011     | 10 |
| 194.726 040 | 25.40  | 40 | 21 | 16 | 050.011     | 10 |

ERC 11



| ART.        | d      | L  | H  | D  | art. pinza | E  |
|-------------|--------|----|----|----|------------|----|
| 194.015 040 | 15.875 | 40 | 36 | 22 | 050.016    | 10 |
| 194.016 040 | 16     | 40 | 36 | 22 | 050.016    | 10 |

ERC 16

Pince DIN 6499B  
Collet DIN 6499B

| ART.        | d      | L  | H  | D  | art. pinza | E  |
|-------------|--------|----|----|----|------------|----|
| 194.015 040 | 15.875 | 40 | 36 | 22 | 050.016    | 10 |
| 194.016 040 | 16     | 40 | 36 | 22 | 050.016    | 10 |

ERC 16

| ART.        | d     | L   | H  | D  | art. pinza | E  |
|-------------|-------|-----|----|----|------------|----|
| 194.019 050 | 19.05 | 50  | 30 | 22 | 050.016    | 14 |
| 194.019 070 | 19.05 | 70  | 30 | 22 | 050.016    | 14 |
| 194.019 120 | 19.05 | 120 | 30 | 22 | 050.016    | 14 |

ERC 16

|             |    |     |    |    |         |    |
|-------------|----|-----|----|----|---------|----|
| 194.020 050 | 20 | 50  | 30 | 22 | 050.016 | 14 |
| 194.020 070 | 20 | 70  | 30 | 22 | 050.016 | 14 |
| 194.020 120 | 20 | 120 | 30 | 22 | 050.016 | 14 |

|             |    |     |    |    |         |    |
|-------------|----|-----|----|----|---------|----|
| 194.022 050 | 22 | 50  | 30 | 22 | 050.016 | 14 |
| 194.022 080 | 22 | 80  | 30 | 22 | 050.016 | 14 |
| 194.022 120 | 22 | 120 | 30 | 22 | 050.016 | 14 |

|             |    |     |    |    |         |    |
|-------------|----|-----|----|----|---------|----|
| 194.025 050 | 25 | 50  | 30 | 22 | 050.016 | 14 |
| 194.025 070 | 25 | 70  | 30 | 22 | 050.016 | 14 |
| 194.025 120 | 25 | 120 | 30 | 22 | 050.016 | 14 |

|             |       |     |    |    |         |    |
|-------------|-------|-----|----|----|---------|----|
| 194.026 050 | 25.40 | 50  | 30 | 22 | 050.016 | 14 |
| 194.026 070 | 25.40 | 70  | 30 | 22 | 050.016 | 14 |
| 194.026 120 | 25.40 | 120 | 30 | 22 | 050.016 | 14 |

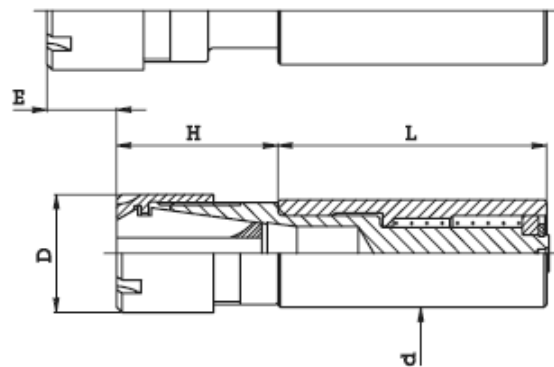
| ART.        | d     | L   | H  | D  | art. pinza | E  |
|-------------|-------|-----|----|----|------------|----|
| 194.119 050 | 19.05 | 50  | 40 | 28 | 050.020    | 14 |
| 194.119 070 | 19.05 | 70  | 40 | 28 | 050.020    | 14 |
| 194.119 120 | 19.05 | 120 | 40 | 28 | 050.020    | 14 |

|             |    |     |    |    |         |    |
|-------------|----|-----|----|----|---------|----|
| 194.120 050 | 20 | 50  | 40 | 28 | 050.020 | 14 |
| 194.120 070 | 20 | 70  | 40 | 28 | 050.020 | 14 |
| 194.120 120 | 20 | 120 | 40 | 28 | 050.020 | 14 |

|             |    |     |    |    |         |    |
|-------------|----|-----|----|----|---------|----|
| 194.122 050 | 22 | 50  | 40 | 28 | 050.020 | 14 |
| 194.122 080 | 22 | 80  | 40 | 28 | 050.020 | 14 |
| 194.122 120 | 22 | 120 | 40 | 28 | 050.020 | 14 |

|             |    |     |    |    |         |    |
|-------------|----|-----|----|----|---------|----|
| 194.125 050 | 25 | 50  | 40 | 28 | 050.020 | 14 |
| 194.125 070 | 25 | 70  | 40 | 28 | 050.020 | 14 |
| 194.125 120 | 25 | 120 | 40 | 28 | 050.020 | 14 |

|             |       |     |    |    |         |    |
|-------------|-------|-----|----|----|---------|----|
| 194.126 050 | 25.40 | 50  | 40 | 28 | 050.020 | 14 |
| 194.126 070 | 25.40 | 70  | 40 | 28 | 050.020 | 14 |
| 194.126 120 | 25.40 | 120 | 40 | 28 | 050.020 | 14 |



ERC 25

ERC 20

| Code        |       |     |    |    | Collet code |    |
|-------------|-------|-----|----|----|-------------|----|
| ART.        | d     | L   | H  | D  | art. pinza  | E  |
| 194.219 050 | 19.05 | 50  | 42 | 35 | 050.025     | 14 |
| 194.219 070 | 19.05 | 70  | 42 | 35 | 050.025     | 14 |
| 194.219 120 | 19.05 | 120 | 42 | 35 | 050.025     | 14 |

|             |    |     |    |    |         |    |
|-------------|----|-----|----|----|---------|----|
| 194.220 050 | 20 | 50  | 42 | 35 | 050.025 | 14 |
| 194.220 070 | 20 | 70  | 42 | 35 | 050.025 | 14 |
| 194.220 120 | 20 | 120 | 42 | 35 | 050.025 | 14 |

|             |    |     |    |    |         |    |
|-------------|----|-----|----|----|---------|----|
| 194.222 050 | 22 | 50  | 42 | 35 | 050.025 | 14 |
| 194.222 080 | 22 | 80  | 42 | 35 | 050.025 | 14 |
| 194.222 120 | 22 | 120 | 42 | 35 | 050.025 | 14 |

|             |    |     |    |    |         |    |
|-------------|----|-----|----|----|---------|----|
| 194.225 050 | 25 | 50  | 42 | 35 | 050.025 | 14 |
| 194.225 070 | 25 | 70  | 42 | 35 | 050.025 | 14 |
| 194.225 120 | 25 | 120 | 42 | 35 | 050.025 | 14 |

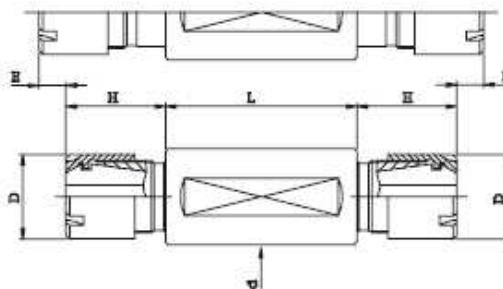
|             |       |     |    |    |         |    |
|-------------|-------|-----|----|----|---------|----|
| 194.226 050 | 25.40 | 50  | 42 | 35 | 050.025 | 14 |
| 194.226 070 | 25.40 | 70  | 42 | 35 | 050.025 | 14 |
| 194.226 120 | 25.40 | 120 | 42 | 35 | 050.025 | 14 |

## Porte taraud flottant double tension type 195 - Double floating tap holder with extension type 195

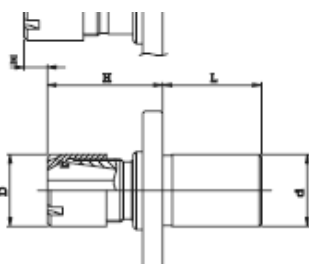
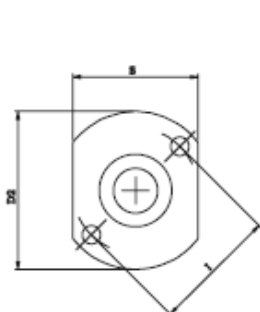
Pince DIN 6499B  
Collet DIN 6499B



| Code        |       |    |      |    |          |            | Collet code |  |
|-------------|-------|----|------|----|----------|------------|-------------|--|
| ART.        | d     | L  | H    | D  | X        | Art. pinza | E           |  |
| 195.719 050 | 19.05 | 50 | 16.5 | 16 | 0.5 - 7  | ERC 11     | 8           |  |
| 195.719 060 | 19.05 | 60 | 16.5 | 16 | 0.5 - 7  | ERC 11     | 8           |  |
| 195.720 050 | 20    | 50 | 16.5 | 16 | 0.5 - 7  | ERC 11     | 8           |  |
| 195.720 060 | 20    | 60 | 16.5 | 16 | 0.5 - 7  | ERC 11     | 8           |  |
| 195.722 050 | 22    | 50 | 16.5 | 16 | 0.5 - 7  | ERC 11     | 8           |  |
| 195.722 060 | 22    | 60 | 16.5 | 16 | 0.5 - 7  | ERC 11     | 8           |  |
|             |       |    |      |    |          |            |             |  |
| 195.022 050 | 22    | 50 | 26   | 22 | 0.5 - 10 | ERC 16     | 8           |  |
| 195.022 060 | 22    | 60 | 26   | 22 | 0.5 - 10 | ERC 16     | 8           |  |
| 195.022 095 | 22    | 95 | 26   | 22 | 0.5 - 10 | ERC 16     | 8           |  |
| 195.025 050 | 25    | 50 | 26   | 22 | 0.5 - 10 | ERC 16     | 8           |  |
| 195.025 060 | 25    | 60 | 26   | 22 | 0.5 - 10 | ERC 16     | 8           |  |
| 195.026 050 | 25.40 | 50 | 26   | 22 | 0.5 - 10 | ERC 16     | 8           |  |
| 195.026 060 | 25.40 | 60 | 26   | 22 | 0.5 - 10 | ERC 16     | 8           |  |



## Porte taraud mini type Star - Mini tap holder type Star

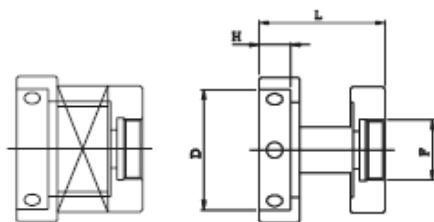


Pince DIN 6499B  
Collet DIN 6499B

| Code       |              |    |    |    |    |          |    |    |            | Collet code |   |
|------------|--------------|----|----|----|----|----------|----|----|------------|-------------|---|
| ART.       | d            | L  | H  | D  | X  | D2       | S  | I  | Art. pinza | E           |   |
| STAR SR 20 | 196.022 030  | 22 | 30 | 36 | 22 | 0.5 - 10 | 48 | 38 | 38         | ERC 16      | 8 |
| STAR SR 32 | 196.022 030B | 22 | 30 | 36 | 22 | 0.5 - 10 | 60 | 38 | 50         | ERC 16      | 8 |

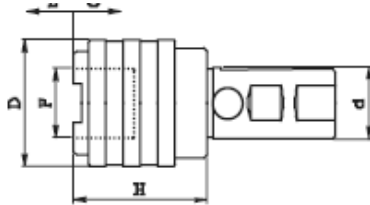
## Porte filière - Die holder

Peut être utilisé avec les portes tarauds 194.000 - 195.000  
Can be used on tap holders 194.000 - 195.000



| Code         |    |    |    |   | Thread |
|--------------|----|----|----|---|--------|
| ART.         | D  | H  | L  | F |        |
| 382.716 025  | 16 | 5  | 25 |   | 19x1   |
| 382.716 040  | 16 | 5  | 40 |   | 19x1   |
| 382.720 025B | 20 | 5  | 25 |   | 19x1   |
| 382.720.040B | 20 | 5  | 40 |   | 19x1   |
| 382.720 025  | 20 | 7  | 25 |   | 19x1   |
| 382.720 040  | 20 | 7  | 40 |   | 19x1   |
| 382.725 025  | 25 | 9  | 25 |   | 19x1   |
| 382.725 040  | 25 | 9  | 40 |   | 19x1   |
| 382.730 040  | 30 | 11 | 40 |   | 19x1   |
| 382.738 040  | 38 | 10 | 40 |   | 19x1   |

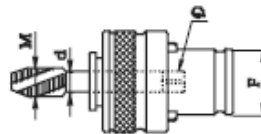
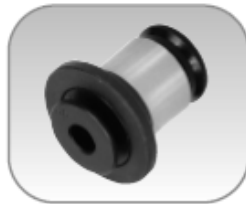
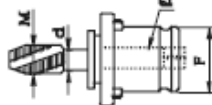
## Porte taraud flottant à changement rapide - Quick change floating tap holder



| Code    |    |    |    | extension    | compression    | F  | Tap capacity |
|---------|----|----|----|--------------|----------------|----|--------------|
| ART.    | d  | H  | D  | estrazione E | compressione C | F  | Per maschi   |
| 198.120 | 20 | 41 | 38 | 9            | 9              | 19 | M3 - M12     |
| 198.125 | 25 | 41 | 38 | 9            | 9              | 19 | M3 - M12     |
| 198.132 | 32 | 41 | 38 | 9            | 9              | 19 | M3 - M12     |
| 198.140 | 40 | 41 | 38 | 9            | 9              | 19 | M3 - M12     |
| 198.225 | 25 | 63 | 55 | 15           | 15             | 31 | M3 - M20     |
| 198.232 | 32 | 63 | 55 | 15           | 15             | 31 | M3 - M20     |
| 198.240 | 40 | 63 | 55 | 15           | 15             | 31 | M3 - M20     |

## Insert pour porte taraud flottant à changement rapide

Insert for quick change floating tap holder



Senza frizione - Without safety clutch

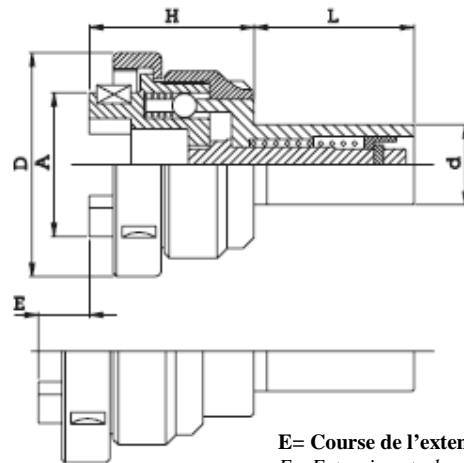
| Code     |     | square   |        |      |    |
|----------|-----|----------|--------|------|----|
| ART.     | d   | Quadro Q | M      | Fig. | F  |
| Z B0.025 | 2.5 | 2.1      | M1     | 1    | 13 |
| Z B0.028 | 2.8 | 2.1      | M2-2.5 | 1    | 13 |
| Z B0.035 | 3.5 | 2.7      | M3     | 1    | 13 |
| Z B0.045 | 4.5 | 3.4      | M4     | 1    | 13 |
| Z B0.060 | 6   | 4.9      | M5-6-8 | 1    | 13 |
| Z B0.070 | 7   | 5.5      | M10    | 1    | 13 |
| Z B0.080 | 8   | 6.2      | M8     | 1    | 13 |
| Z B1.035 | 3.5 | 2.7      | M3     | 1    | 19 |
| Z B1.045 | 4.5 | 3.4      | M4     | 1    | 19 |
| Z B1.060 | 6   | 4.9      | M5-6-8 | 1    | 19 |
| Z B1.070 | 7   | 5.5      | M10    | 1    | 19 |
| Z B1.080 | 8   | 6.2      | M8     | 1    | 19 |
| Z B1.090 | 9   | 7        | M12    | 1    | 19 |
| Z B1.100 | 10  | 8        | M10    | 1    | 19 |
| Z B1.110 | 11  | 9        | M14    | 1    | 19 |
| Z B2.060 | 6   | 4.9      | M5-6-8 | 1    | 31 |
| Z B2.070 | 7   | 5.5      | M10    | 1    | 31 |
| Z B2.080 | 8   | 6.2      | M8     | 1    | 31 |
| Z B2.090 | 9   | 7        | M12    | 1    | 31 |
| Z B2.100 | 10  | 8        | M10    | 1    | 31 |
| Z B2.110 | 11  | 9        | M14    | 1    | 31 |
| Z B2.120 | 12  | 9        | M16    | 1    | 31 |
| Z B2.140 | 14  | 11       | M18    | 1    | 31 |
| Z B2.160 | 16  | 12       | M20    | 1    | 31 |
| Z B2.180 | 18  | 14.5     | M22-24 | 1    | 31 |

Con frizione registrabile - With safety clutch

| Code      |     | square   |        |      |    |
|-----------|-----|----------|--------|------|----|
| ART.      | d   | Quadro Q | M      | Fig. | F  |
| Z BF0.025 | 2.5 | 2.1      | M1     | 2    | 13 |
| Z BF0.028 | 2.8 | 2.1      | M2-2.5 | 2    | 13 |
| Z BF0.035 | 3.5 | 2.7      | M3     | 2    | 13 |
| Z BF0.045 | 4.5 | 3.4      | M4     | 2    | 13 |
| Z BF0.060 | 6   | 4.9      | M5-6-8 | 2    | 13 |
| Z BF0.070 | 7   | 5.5      | M10    | 2    | 13 |
| Z BF0.080 | 8   | 6.2      | M8     | 2    | 13 |
| Z BF1.035 | 3.5 | 2.7      | M3     | 2    | 19 |
| Z BF1.045 | 4.5 | 3.4      | M4     | 2    | 19 |
| Z BF1.060 | 6   | 4.9      | M5-6-8 | 2    | 19 |
| Z BF1.070 | 7   | 5.5      | M10    | 2    | 19 |
| Z BF1.080 | 8   | 6.2      | M8     | 2    | 19 |
| Z BF1.090 | 9   | 7        | M12    | 2    | 19 |
| Z BF1.100 | 10  | 8        | M10    | 2    | 19 |
| Z BF1.110 | 11  | 9        | M14    | 2    | 19 |
| Z BF2.060 | 6   | 4.9      | M5-6-8 | 2    | 31 |
| Z BF2.070 | 7   | 5.5      | M10    | 2    | 31 |
| Z BF2.080 | 8   | 6.2      | M8     | 2    | 31 |
| Z BF2.090 | 9   | 7        | M12    | 2    | 31 |
| Z BF2.100 | 10  | 8        | M10    | 2    | 31 |
| Z BF2.110 | 11  | 9        | M14    | 2    | 31 |
| Z BF2.120 | 12  | 9        | M16    | 2    | 31 |
| Z BF2.140 | 14  | 11       | M18    | 2    | 31 |
| Z BF2.160 | 16  | 12       | M20    | 2    | 31 |
| Z BF2.180 | 18  | 14.5     | M22-24 | 2    | 31 |

## Porte filière flottant type 210 - Floating die holder type 210

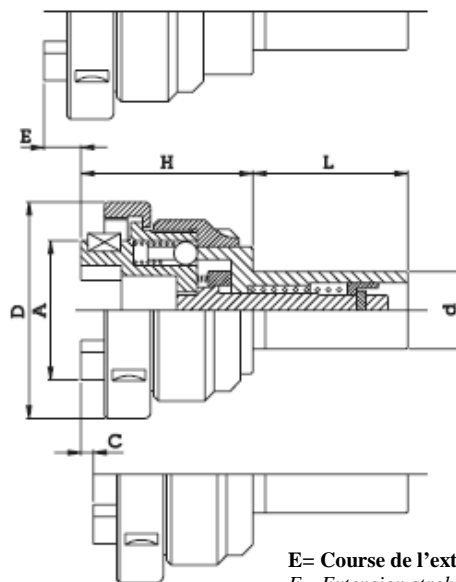
| Code     |        |    |    |    |    | Die holder bush code |    |
|----------|--------|----|----|----|----|----------------------|----|
| ART.     | d      | L  | H  | D  | A  | art. cappelotto      | E  |
| 210.115  | 15.875 | 32 | 33 | 36 | 21 | 218....              | 8  |
| 210.116  | 16     | 32 | 33 | 36 | 21 | 218....              | 8  |
| 210.119  | 19.05  | 32 | 33 | 36 | 21 | 218....              | 8  |
| 210.120  | 20     | 32 | 33 | 36 | 21 | 218....              | 8  |
|          |        |    |    |    |    |                      |    |
| 210.219  | 19.05  | 46 | 42 | 57 | 32 | 220....              | 12 |
| 210.220  | 20     | 46 | 42 | 57 | 32 | 220....              | 12 |
| 210.222  | 22     | 46 | 42 | 57 | 32 | 220....              | 12 |
| 210.225  | 25     | 46 | 42 | 57 | 32 | 220....              | 12 |
| 210.226  | 25.40  | 46 | 42 | 57 | 32 | 220....              | 12 |
|          |        |    |    |    |    |                      |    |
| 210.325  | 25     | 50 | 51 | 70 | 45 | 230....              | 16 |
| 210.325L | 25     | 80 | 51 | 70 | 45 | 230....              | 16 |
| 210.326  | 25.40  | 50 | 51 | 70 | 45 | 230....              | 16 |
| 210.326L | 25.40  | 80 | 51 | 70 | 45 | 230....              | 16 |
| 210.330  | 30     | 50 | 51 | 70 | 45 | 230....              | 16 |
| 210.331  | 31.75  | 50 | 51 | 70 | 45 | 230....              | 16 |
| 210.332  | 32     | 50 | 51 | 70 | 45 | 230....              | 16 |
| 210.340  | 40     | 85 | 51 | 70 | 45 | 230....              | 16 |



E= Course de l'extention  
E= Extension stroke

## Porte filière flottant avec extension & compression type 210A Floating die holder with extension & compression type 210A

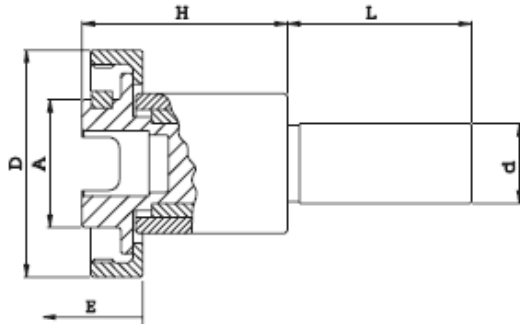
| Code      |        |    |    |    |    | Die holder bush code |     |      |
|-----------|--------|----|----|----|----|----------------------|-----|------|
| ART.      | d      | L  | H  | D  | A  | art. cappelotto      | E   | C    |
| 210.115A  | 15.875 | 32 | 33 | 36 | 21 | 218....              | 5.5 | -2.5 |
| 210.116A  | 16     | 32 | 33 | 36 | 21 | 218....              | 5.5 | -2.5 |
| 210.119A  | 19.05  | 32 | 33 | 36 | 21 | 218....              | 5.5 | -2.5 |
| 210.120A  | 20     | 32 | 33 | 36 | 21 | 218....              | 5.5 | -2.5 |
|           |        |    |    |    |    |                      |     |      |
| 210.219A  | 19.05  | 46 | 45 | 57 | 32 | 220....              | 9   | -3   |
| 210.220A  | 20     | 46 | 45 | 57 | 32 | 220....              | 9   | -3   |
| 210.222A  | 22     | 46 | 45 | 57 | 32 | 220....              | 9   | -3   |
| 210.225A  | 25     | 46 | 45 | 57 | 32 | 220....              | 9   | -3   |
| 210.226A  | 25.40  | 46 | 45 | 57 | 32 | 220....              | 9   | -3   |
|           |        |    |    |    |    |                      |     |      |
| 210.325A  | 25     | 50 | 55 | 71 | 45 | 230....              | 12  | -4   |
| 210.325AL | 25     | 80 | 55 | 71 | 45 | 230....              | 12  | -4   |
| 210.326A  | 25.40  | 50 | 55 | 71 | 45 | 230....              | 12  | -4   |
| 210.326AL | 25.40  | 80 | 55 | 71 | 45 | 230....              | 12  | -4   |
| 210.330A  | 30     | 50 | 55 | 71 | 45 | 230....              | 12  | -4   |
| 210.331A  | 31.75  | 50 | 55 | 71 | 45 | 230....              | 12  | -4   |
| 210.332A  | 32     | 50 | 55 | 71 | 45 | 230....              | 12  | -4   |
| 210.340A  | 40     | 85 | 55 | 71 | 45 | 230....              | 12  | -4   |



E= Course de l'extention  
E= Extension stroke

H= Mesure avec la pince  
H= Measure with collet

Porte filière flottant avec extension type 211 - Floating die holder with extension type 211



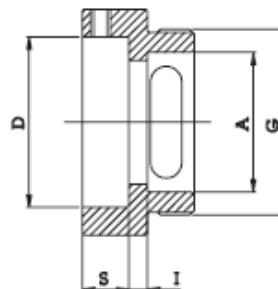
E= Course de l'extension  
E= Extension stroke



| Code     |       |    |    |    |    | Die holder bush code |    |
|----------|-------|----|----|----|----|----------------------|----|
| ART.     | d     | H  | L  | D  | A  | art. cappelotto      | E  |
| 211.216  | 16    | 51 | 46 | 57 | 32 | 220....              | 22 |
| 211.219  | 19.05 | 51 | 46 | 57 | 32 | 220....              | 22 |
| 211.220  | 20    | 51 | 46 | 57 | 32 | 220....              | 22 |
| 211.222  | 22    | 51 | 46 | 57 | 32 | 220....              | 22 |
| 211.216L | 16    | 59 | 46 | 57 | 32 | 220....              | 30 |
| 211.326  | 25.40 | 65 | 80 | 71 | 45 | 230....              | 30 |

Ecrou porte filière - Nut for die holder

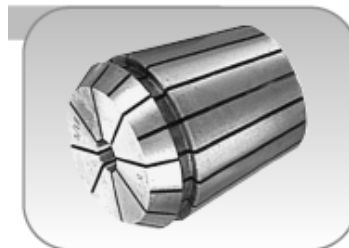
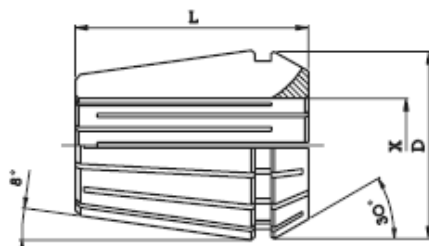
| Code    |    |    |   |    |           |
|---------|----|----|---|----|-----------|
| ART.    | D  | S  | I | A  | G         |
| 220.116 | 16 | 5  | 5 | 32 | SG 48x1.5 |
| 220.120 | 20 | 5  | 5 | 32 | SG 48x1.5 |
| 220.220 | 20 | 7  | 3 | 32 | SG 48x1.5 |
| 220.125 | 25 | 9  | 3 | 32 | SG 48x1.5 |
| 220.130 | 30 | 11 | 3 | 32 | SG 48x1.5 |
| 220.138 | 38 | 10 | 6 | 32 | SG 48x1.5 |
| 220.238 | 38 | 14 | 3 | 32 | SG 48x1.5 |
| 220.145 | 45 | 14 | 3 | 32 | SG 48x1.5 |
| 220.245 | 45 | 18 | 3 | 32 | SG 48x1.5 |
| 220.150 | 50 | 16 | 4 | 32 | SG 48x1.5 |
| 220.155 | 55 | 16 | 4 | 32 | SG 48x1.5 |
| ART.    | D  | S  | I | A  | G         |
| 230.220 | 20 | 7  | 9 | 45 | SG 60x1.5 |
| 230.125 | 25 | 9  | 7 | 45 | SG 60x1.5 |
| 230.130 | 30 | 11 | 5 | 45 | SG 60x1.5 |
| 230.138 | 38 | 10 | 6 | 45 | SG 60x1.5 |
| 230.238 | 38 | 14 | 3 | 45 | SG 60x1.5 |
| 230.145 | 45 | 14 | 3 | 45 | SG 60x1.5 |
| 230.245 | 45 | 18 | 4 | 45 | SG 60x1.5 |
| 230.150 | 50 | 16 | 6 | 45 | SG 60x1.5 |
| 230.155 | 55 | 16 | 6 | 45 | SG 60x1.5 |
| 230.165 | 65 | 18 | 6 | 45 | SG 60x1.5 |
| 230.175 | 75 | 20 | 6 | 45 | SG 60x1.5 |



| Code     |    |    |   |    |      |
|----------|----|----|---|----|------|
| ART.     | D  | S  | I | A  | G    |
| 218.116  | 16 | 5  | 2 | 21 | 28x1 |
| 218.120  | 20 | 5  | 2 | 21 | 28x1 |
| 218.120B | 20 | 7  | 2 | 21 | 28x1 |
| 218.125  | 25 | 9  | 2 | 21 | 28x1 |
| 218.130  | 30 | 11 | 3 | 21 | 28x1 |

## Pinces ERC DIN 6499B - DIN 6499B ERC collets

ERC COLLETS



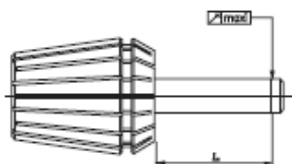
### Pince standard / Standard collet

| Code     | Type   |      |      | Bores min - max |       | Gripping Range     | Collets for range |
|----------|--------|------|------|-----------------|-------|--------------------|-------------------|
| ART.     | Tipo   | D    | L    | X min           | X max | Capacità serraggio | Pinze per serie   |
| 050.008  | ERC 8  | 8,5  | 13,5 | 1,0             | 5,0   | 0,5                | 9                 |
| 050.011  | ERC 11 | 11,5 | 18   | 1,0             | 7,0   | 0,5                | 13                |
| 050.012  | ERC 12 | 12   | 20   | 1,0             | 7,0   | 0,5                | 13                |
| 050.016  | ERC 16 | 17   | 27   | 1,0             | 3,0   | 0,5                | 5                 |
| 050.016  | ERC 16 | 17   | 27   | 4,0             | 10,0  | 1,0                | 7                 |
| 050.016* | ERC 16 | 17   | 22   | 11,0            | 12,0  | 1,0                | 2                 |
| 050.020  | ERC 20 | 21   | 31   | 1,0             | 3,0   | 0,5                | 5                 |
| 050.020  | ERC 20 | 21   | 31   | 4,0             | 13,0  | 1,0                | 10                |
| 050.020* | ERC 20 | 21   | 24   | 14,0            | 15,0  | 1,0                | 2                 |
| 050.025  | ERC 25 | 26   | 35   | 1,0             | 3,0   | 0,5                | 5                 |
| 050.025  | ERC 25 | 26   | 35   | 4,0             | 16,0  | 1,0                | 13                |
| 050.025* | ERC 25 | 26   | 26   | 17,0            | 20,0  | 1,0                | 4                 |
| 050.032  | ERC 32 | 33   | 40   | 2,5             | 3,0   | 0,5                | 2                 |
| 050.032  | ERC 32 | 33   | 40   | 4,0             | 20,0  | 1,0                | 17                |
| 050.032* | ERC 32 | 33   | 33   | 21,0            | 25,0  | 1,0                | 5                 |
| 050.040  | ERC 40 | 41   | 46   | 3,0             | 30,0  | 1,0                | 28                |
| 050.050  | ERC 50 | 52   | 60   | 6,0             | 34,0  | 1,0                | 29                |

### Pince de précision / High precision collet

| Code     | Type   |      |      | Bores min - max |       | Gripping Range     | Collets for range |
|----------|--------|------|------|-----------------|-------|--------------------|-------------------|
| ART.     | Tipo   | D    | L    | X min           | X max | Capacità serraggio | Pinze per serie   |
| 050.008P | ERC 8  | 8,5  | 13,5 | 1,0             | 5,0   | 0,5                | 9                 |
| 050.011P | ERC 11 | 11,5 | 18   | 1,0             | 7,0   | 0,5                | 13                |
| 050.012P | ERC 12 | 12   | 20   | 1,0             | 7,0   | 0,5                | 13                |
| 050.016P | ERC 16 | 17   | 27   | 1,0             | 3,0   | 0,5                | 5                 |
| 050.016P | ERC 16 | 17   | 27   | 4,0             | 10,0  | 1,0                | 7                 |
| 050.020P | ERC 20 | 21   | 31   | 1,0             | 3,0   | 0,5                | 5                 |
| 050.020P | ERC 20 | 21   | 31   | 4,0             | 13,0  | 1,0                | 10                |
| 050.025P | ERC 25 | 26   | 35   | 1,0             | 3,0   | 0,5                | 5                 |
| 050.025P | ERC 25 | 26   | 35   | 4,0             | 16,0  | 1,0                | 13                |
| 050.032P | ERC 32 | 33   | 40   | 2,5             | 3,0   | 0,5                | 2                 |
| 050.032P | ERC 32 | 33   | 40   | 4,0             | 20,0  | 1,0                | 17                |
| 050.040P | ERC 40 | 41   | 46   | 3,0             | 26,0  | 1,0                | 28                |

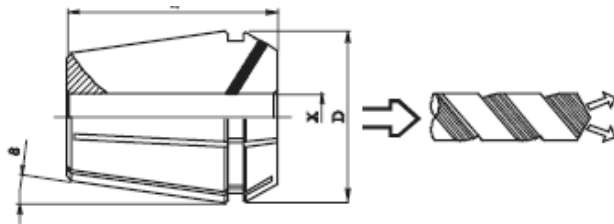
Test concentricità  
Concentricity test



(\*) Valori validi solo per il diametro nominale delle pinze.  
(\*) The tolerances are valid only for nominal diameter of the collets.

| Alesaggio D<br>(Bores) |     |    | Limite max di concentricità (*)<br>(max concentricità limit) |   |
|------------------------|-----|----|--|---|
| Min                    | Max | L  | Pinze standard<br>(Standard collets)                         | Pinze alta precisione<br>(High precision collets) |
| 1                      | 1,6 | 6  | 0,015  | 0,010   |
| 1,6                    | 3   | 10 | 0,015  | 0,010   |
| 3                      | 7   | 16 | 0,015  | 0,010   |
| 7                      | 10  | 25 | 0,015  | 0,010   |
| 10                     | 18  | 40 | 0,020  | 0,015   |
| 18                     | 26  | 50 | 0,020  | 0,015   |
| 26                     | 40  | 60 | 0,020  | 0,015   |

## Pinces ERC DIN 6499 pour arosage central - Saled collets for coolant through tools

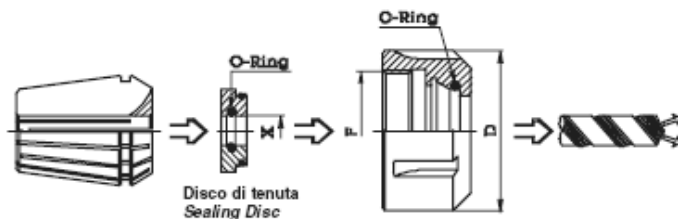


MAX: 70 bar - 1000 p.s.i.



| Code     | Type   |      |    | Bores min - max* |        |              | Collets for range |
|----------|--------|------|----|------------------|--------|--------------|-------------------|
| ART.     | Tipo   | D    | L  | X min*           | X max* | progressione | Pinze per serie   |
| 050.011R | ERC 11 | 11.5 | 18 | 3                | 7      | 0.5          | 9                 |
| 050.016R | ERC 16 | 17   | 27 | 3                | 10     | 0.5          | 15                |
| 050.020R | ERC 20 | 21   | 31 | 3                | 13     | 0.5          | 21                |
| 050.025R | ERC 25 | 26   | 35 | 3,5              | 16     | 0.5          | 27                |
| 050.032R | ERC 32 | 33   | 40 | 4                | 20     | 0.5          | 35                |
| 050.040R | ERC 40 | 41   | 46 | 4                | 26     | 0.5          | 45                |

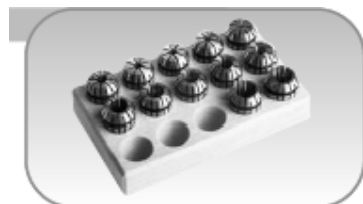
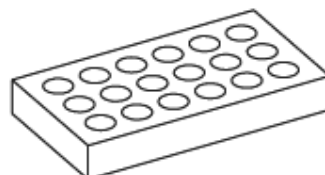
## Ecrou et disque pour arosage central - Saled nut and ring for coolant through tools



| Code nut    | Type   |    | Thread | Wrench  | Code Sealing Disc    | Bores min - max* |        | progression  |
|-------------|--------|----|--------|---------|----------------------|------------------|--------|--------------|
| ART. Ghiera | Tipo   | D  | F      | Chiave  | ART. Disco di tenuta | X min*           | X max* | progressione |
| 052.216R    | ERC 16 | 28 | 22x1.5 | 053.216 | 052.216RD            | 4                | 10     | 0.5          |
| 052.220R    | ERC 20 | 34 | 25x1.5 | 053.220 | 052.220RD            | 4                | 13     | 0.5          |
| 052.325R    | ERC 25 | 42 | 32x1.5 | 053.325 | 052.325RD            | 3,5              | 16     | 0.5          |
| 052.332R    | ERC 32 | 50 | 40x1.5 | 053.332 | 052.332RD            | 3,5              | 20     | 0.5          |
| 052.340R    | ERC 40 | 63 | 50x1.5 | 053.340 | 052.340RD            | 4                | 26     | 0.5          |

## Boîtes de rangement pour pinces ERC - Collets ERC racks

| Code      | Collet | collets seats |
|-----------|--------|---------------|
| ART.      | Pinza  | n. sedi       |
| 050.108 B | ERC 8  | 10            |
| 050.111 B | ERC 11 | 14            |
| 050.112 B | ERC 12 | 14            |
| 050.116 B | ERC 16 | 15            |
| 050.120 B | ERC 20 | 15            |
| 050.125 B | ERC 25 | 20            |
| 050.132 B | ERC 32 | 20            |
| 050.140 B | ERC 40 | 30            |



## Ecrou porte pinces - Collet holders nut

| GHIERE MINI (MINI CLAMPING NUTS) Fig. 1 |        |    |    |         |
|---|--------|----|----|---------|
| Code                                    | Type   |    |    | Thread  |
| ART.                                    | Tipo   | D  | H  | F       |
| 052.108                                 | ERC 8  | 12 | 11 | 10x0.75 |
| 052.111                                 | ERC 11 | 16 | 11 | 13x0.75 |
| 052.116                                 | ERC 16 | 22 | 17 | 19x1    |
| 052.120                                 | ERC 20 | 28 | 19 | 24x1    |
| 052.125                                 | ERC 25 | 35 | 20 | 30x1    |

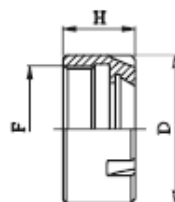


Fig. 1



| GHIERE ESAGONALI (HEXAGONAL CLAMPING NUTS) Fig. 2 |        |    |    |         |
|---|--------|----|----|---------|
| Code  | Type   |    |    | Thread  |
| ART.  | Tipo   | D  | H  | F       |
| 052.211   | ERC 11 | 19 | 11 | 14x0.75 |
| 052.216   | ERC 16 | 28 | 17 | 22x1.5  |
| 052.220   | ERC 20 | 34 | 19 | 25x1.5  |

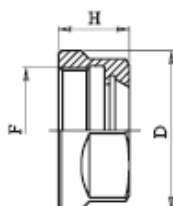


Fig. 2



| GHIERE STANDARD (STANDARD CLAMPING NUTS) Fig. 3 |        |    |      |        |
|---|--------|----|------|--------|
| Code  | Type   |    |      | Thread |
| ART.  | Tipo   | D  | H    | F      |
| 052.316   | ERC 16 | 32 | 17.5 | 22x1.5 |
| 052.320   | ERC 20 | 35 | 19   | 25x1.5 |
| 052.325   | ERC 25 | 42 | 20   | 32x1.5 |
| 052.332   | ERC 32 | 50 | 22   | 40x1.5 |
| 052.340   | ERC 40 | 63 | 25   | 50x1.5 |
| 052.350   | ERC 50 | 78 | 35   | 64x2   |

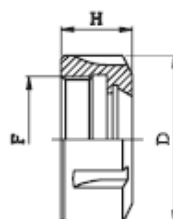


Fig. 3



| GHIERE FILETTO ESTERNO (EXTERNAL THREAD NUTS) Fig. 4 |        |     |      |        |
|--|--------|-----|------|--------|
| Code   | Type   |     |      | Thread |
| ART.   | Tipo   | D   | H    | F      |
| 052.411  | ERC 11 | ... | 6    | 18x1   |
| 052.411 B*   | ERC 11 | ... | 6    | 18x1   |
| 052.416  | ERC 16 | ... | 8    | 24x1   |
| 052.420  | ERC 20 | ... | 11   | 28x1.5 |
| 052.425  | ERC 25 | ... | 12.5 | 32x1.5 |
| 052.432  | ERC 32 | ... | 14   | 40x1.5 |
| 052.432 B*   | ERC 32 | ... | 14   | 40x1.5 |

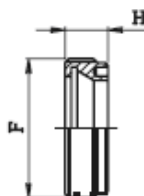
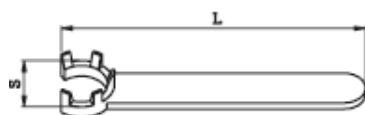


Fig. 4

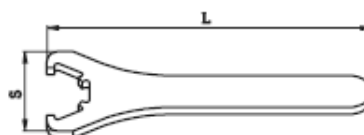


\* Per chiave esagonale - \* For hexagonal wrenches

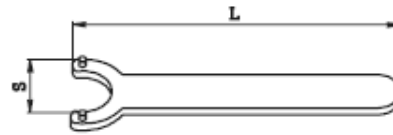
## Clés pour écrous - Wrenches for collet holders nut



| Code    | S  | L   | For Nut Code    |
|---------|----|-----|-----------------|
| ART.    | S  | L   | per ghiera art. |
| 053.108 | 12 | 80  | 052.108         |
| 053.111 | 16 | 96  | 052.111         |
| 053.116 | 22 | 118 | 052.116         |
| 053.120 | 28 | 130 | 052.120         |
| 053.125 | 35 | 132 | 052.125         |



| Code    | S   | L   | For Nut Code    |
|---------|-----|-----|-----------------|
| ART.    | S   | L   | per ghiera art. |
| 053.316 | 50  | 160 | 052.316         |
| 053.320 | 57  | 180 | 052.320         |
| 053.325 | 65  | 210 | 052.325         |
| 053.332 | 75  | 250 | 052.332         |
| 053.340 | 90  | 290 | 052.340         |
| 053.350 | 110 | 350 | 052.350         |



| Code    | S    | L   | For Nut Code    |
|---------|------|-----|-----------------|
| ART.    | S    | L   | per ghiera art. |
| 053.420 | 20.5 | 160 | 052.420         |
| 053.425 | 23.5 | 180 | 052.425         |
| 053.432 | 32   | 200 | 052.432         |

**DEMANDEZ NOS CATALOGUES  
ASKED FOR OUR CATALOGUES**

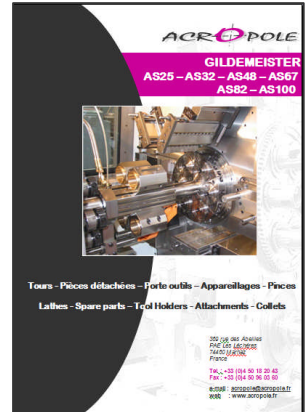
**Equipements – Pièces détachées – Pincettes – accessoires  
Equipment – Spare parts – Collets - Accessories**



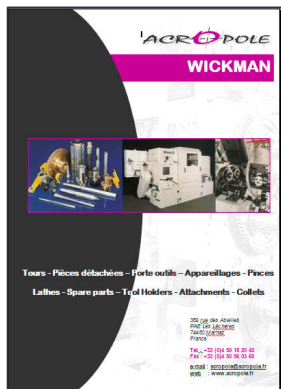
**GILDEMEISTER  
AS16 – GM16 - AS20 – GS20 –  
GM20**



**GILDEMEISTER  
GM32 – GM35 – GM42**



**GILDEMEISTER  
AS25 – AS32 – AS48 – AS67 –  
AS82 – AS100**



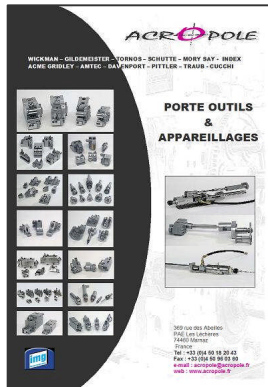
**WICKMAN**



**TORNOS  
AS14 – SAS16 – BS20**



**SCHÜTTE**



**Porte outils – Appareillages  
Tours Multibroches  
Tool holders - Attachments**



**Pincettes  
Collets**



**Clés & vis Anglaises  
Wrenches & English screws**



**ACROPOLE**

369 rue des Abeilles  
PAE Les Léchères  
74460 MARNAZ  
France

**Tel : +33 (0)4 50 18 20 43**  
**Fax : +33 (0)4 50 96 03 60**

**[acropole@acropole.fr](mailto:acropole@acropole.fr)**  
**[www.acropole.fr](http://www.acropole.fr)**