

ACROPOLE

Butées & pointes tournantes Revolving tailstocks & shock absorber



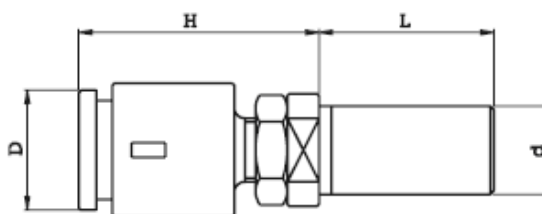
369 rue des Abeilles
PAE Les Léchères
74460 Marnaz
France

Tel : +33 (0)4 50 18 20 43
Fax : +33 (0)4 50 96 03 60

e-mail : acropole@acropole.fr
web : www.acropole.fr

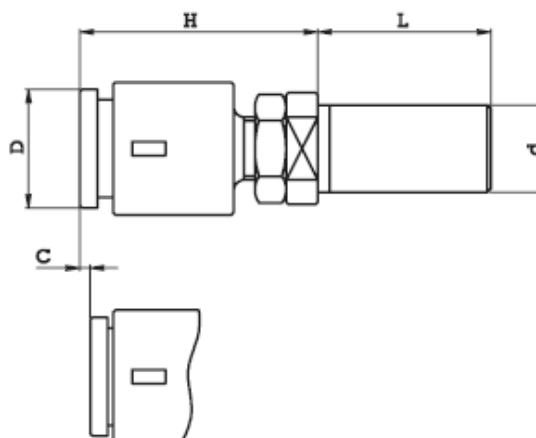
Butée tournante réglable à compensation type 170 - Adjustable stop shock absorber tool holder type 170

Code					
ART.	d	L	H min	H max	D
170.115	15.875	32	36	62	20
170.116	16	32	36	62	20
170.119	19.05	32	36	62	20
170.219	19.05	46	45	75	26
170.220	20	46	45	75	26
170.222	22	46	45	75	26
170.225	25	46	45	75	26
170.226	25.40	46	45	75	26
170.319	19.05	46	62	100	35
170.320	20	46	62	100	35
170.322	22	46	62	100	35
170.325	25	50	62	100	35
170.326	25.40	50	62	100	35
170.330	30	50	62	100	35
170.331	31.75	50	62	100	35
170.332	32	50	62	100	35
170.340	40	85	62	100	35
170.425	25	50	62	100	56
170.426	25.40	50	62	100	56
170.430	30	50	62	100	56
170.431	31.75	50	62	100	56
170.432	32	50	62	100	56
170.440	40	85	62	100	56



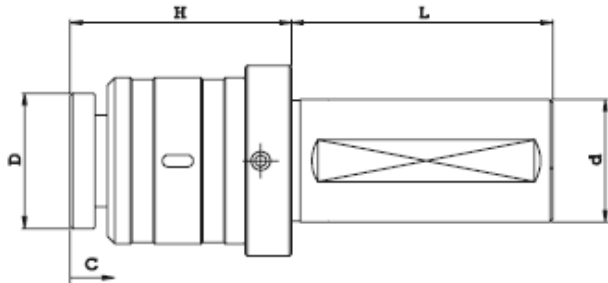
Butée tournante réglable à compensation avec ressort type 170 Adjustable stop shock absorber tool holder with spring type 170

Code						
ART.	d	L	H min	H max	D	C
170.319B	19.05	46	62	100	35	3
170.320B	20	46	62	100	35	3
170.322B	22	46	62	100	35	3
170.325B	25	50	62	100	35	3
170.326B	25.40	50	62	100	35	3
170.330B	30	50	62	100	35	3
170.331B	31.75	50	62	100	35	3
170.332B	32	50	62	100	35	3
170.340B	40	85	62	100	35	3
170.425B	25	50	62	100	56	3
170.426B	25.40	50	62	100	56	3
170.430B	30	50	62	100	56	3
170.431B	31.75	50	62	100	56	3
170.432B	32	50	62	100	56	3
170.440B	40	85	62	100	56	3



C= Course de compression
C= Absorber stroke

Butée tournante réglable à compensation type 170 - Adjustable stop shock absorber tool holder type 170

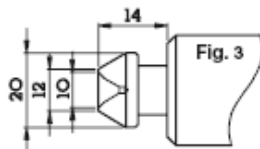
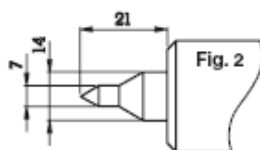
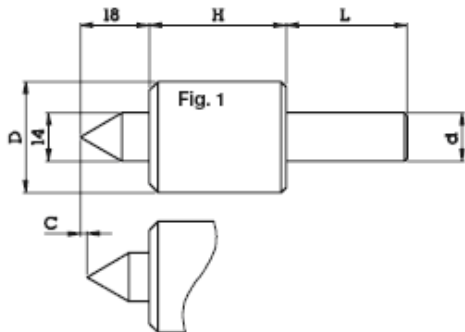


C= Course de compression
C= Absorber stroke



Code						
ART.	d	L	H min	H max	D	C
170.532B	32	70	72	80	44	3
170.540B	40	85	72	80	44	3
170.632B	32	70	72	80	60	3
170.640B	40	85	72	80	60	3

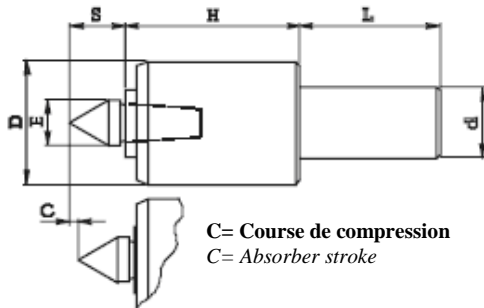
Contrepointe tournante avec compression type 172 - Revolving tailstock with compression type 172



C= Course de compression
C= Absorber stroke

Code								Center
ART.			d	D	H	L	C	Punta
FIG. 1	FIG. 2	FIG. 3						
172.208 F1	172.208 F2	172.208 F3	8	32	39,5	35	2	60°
172.210 F1	172.210 F2	172.210 F3	10	32	39,5	35	2	60°
172.212 F1	172.212 F2	172.212 F3	12	32	39,5	35	2	60°
172.214 F1	172.214 F2	172.214 F3	14	32	39,5	35	2	60°
172.215 F1	172.215 F2	172.215 F3	15,875	32	39,5	35	2	60°
172.216 F1	172.216 F2	172.216 F3	16	32	39,5	35	2	60°
172.219 F1	172.219 F2	172.219 F3	19,05	32	39,5	46	2	60°
172.220 F1	172.220 F2	172.220 F3	20	32	39,5	46	2	60°
172.222 F1	172.222 F2	172.222 F3	22	32	39,5	46	2	60°
172.225 F1	172.225 F2	172.225 F3	25	32	39,5	46	2	60°
172.226 F1	172.226 F2	172.226 F3	25,40	32	39,5	46	2	60°

Contrepoint tournante avec compression type 172 - Revolving tailstock with compression type 172



Code							
ART.	d	D	E	H	L	S	C
172.308	8	32	14	44	35	16	2
172.310	10	32	14	44	35	16	2
172.312	12	32	14	44	35	16	2
172.314	14	32	14	44	35	16	2
172.315	15.875	32	14	44	35	16	2
172.316	16	32	14	44	35	16	2
172.319	19.05	32	14	44	46	16	2
172.320	20	32	14	44	46	16	2
172.322	22	32	14	44	46	16	2
172.325	25	32	14	44	46	16	2
172.326	25.40	32	14	44	46	16	2

La pointe tournante est livrée avec l'article 172.301 (interchangeable)
The revolving tailstock is provided with code 172.301 (interchangeable)

Embout interchangeable type 172 - Interchangeable insert type 172

Pour article 172.300
For part 172.300

Code						Center
ART.	Fig.	E	S	G	F	Punta
172.301	1	14	16	-	-	60°
172.302	2	14	22	7	-	60°
172.303	3	20	12	12	10	60°

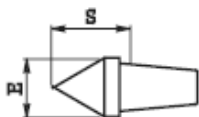


FIG. 1

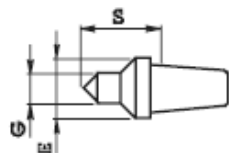


FIG. 2

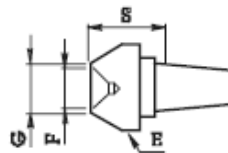
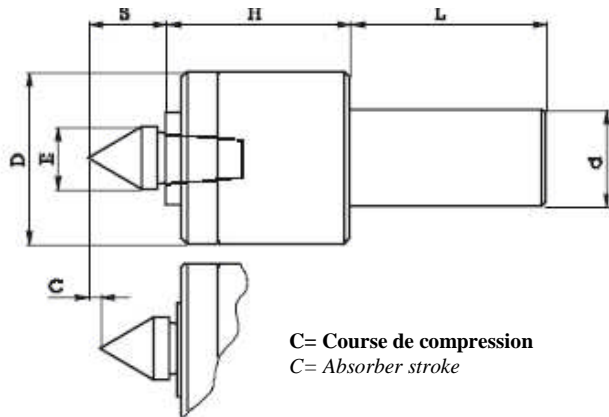


FIG. 3

Contrepoint tournante avec compression type 172400
 Revolving tailstock with compression type 172400



C= Course de compression
 C= Absorber stroke

Code							
ART.	d	D	E	H	L	S	C
172.419	19.05	43	18	43	46	21	3
172.420	20	43	18	43	46	21	3
172.422	22	43	18	43	46	21	3
172.425	25	43	18	43	46	21	3
172.426	25.40	43	18	43	46	21	3
172.430	30	43	18	43	46	21	3
172.431	31.75	43	18	43	46	21	3
172.432	32	43	18	43	46	21	3
172.400 CM2	C.M.2	43	18	43	69	21	3
172.400 CM3	C.M.3	43	18	43	85	21	3

La pointe tournante est livrée avec l'article 172.401 (interchangeable)
 The revolving tailstock is provided with code 172.401(interchangeable)



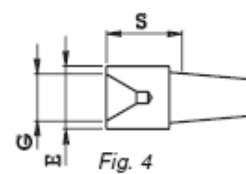
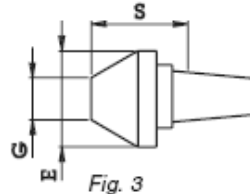
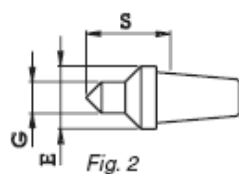
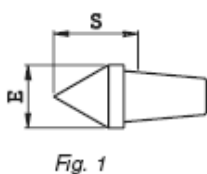
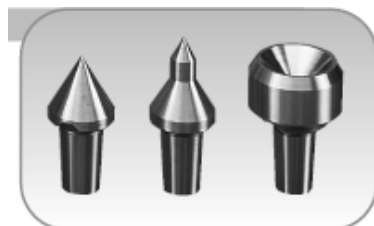
Clé pour inserts réf . 172.411
 Puller code 172.411



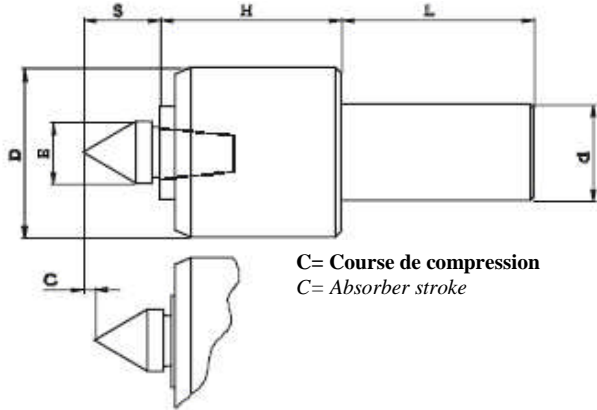
Embout interchangeable type 172400 - Interchangeable insert type 172400

Pour article 172.400
 For part 172.400

Code					Center
ART.	Fig.	E	S	G	Punta
172.401	1	18	21	—	60°
172.401 090	1	18	28	—	90°
172.402	2	18	27	7	60°
172.402B	2	18	38	9	60°
172.403	3	30	21	14	60°
172.404	4	26	20	20	—



Contrepointe tournante avec compression type 172600 Revolving tailstock with compression type 172600



Code							
ART.	d	D	E	H	L	S	C
172.625	25	58	28	71	50	34	2,5
172.626	25.40	58	28	71	50	34	2,5
172.632	32	58	28	71	70	34	2,5
172.640	40	58	28	71	85	34	2,5
172.600 CM3	C.M.3	58	28	71	85	34	2,5
172.600 CM4	C.M.4	58	28	71	109	34	2,5



La pointe tournante est livrée avec l'article 172.601 (interchangeable)
The revolving tailstock is provided with code 172.601(interchangeable)

Embout interchangeable type 172600 - Interchangeable insert type 172600

Pour article 172.600
For part 172.600

Code					Center
ART.	Fig.	E	S	G	Punta
172.601	1	28	34	—	60°
172.602	2	28	40	7	60°
172.602B	2	28	40	12	60°
172.603	3	58	36	25	60°
172.604	4	28	32	24	—

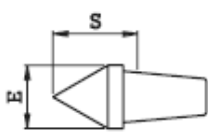


Fig. 1

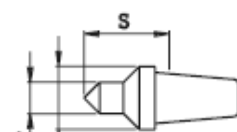


Fig. 2

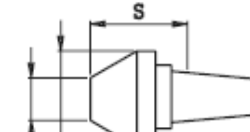


Fig. 3

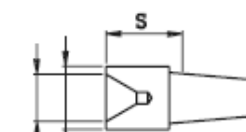


Fig. 4

**DEMANDEZ NOS CATALOGUES
ASKED FOR OUR CATALOGUES**

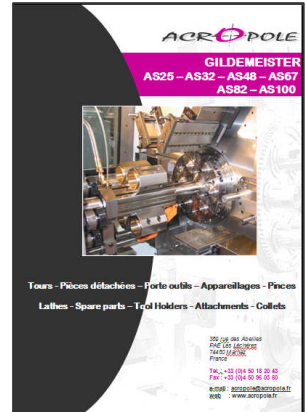
**Equipements – Pièces détachées – Pincettes – accessoires
Equipment – Spare parts – Collets - Accessories**



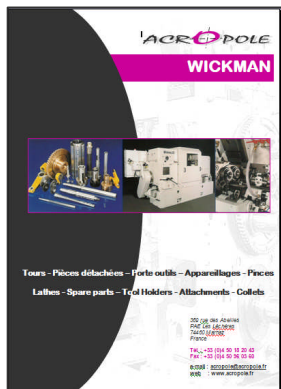
**GILDEMEISTER
AS16 – GM16 - AS20 – GS20 –
GM20**



**GILDEMEISTER
GM32 – GM35 – GM42**



**GILDEMEISTER
AS25 – AS32 – AS48 – AS67 –
AS82 – AS100**



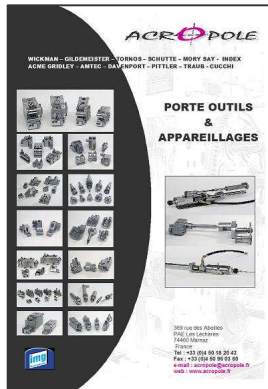
WICKMAN



**TORNOS
AS14 – SAS16 – BS20**



SCHÜTTE



**Porte outils – Appareillages
Tours Multibroches
Tool holders - Attachments**



**Pincettes
Collets**



**Clés & vis Anglaises
Wrenches & English screws**



ACROPOLE

369 rue des Abeilles
PAE Les Léchères
74460 MARNAZ
France

Tel : +33 (0)4 50 18 20 43
Fax : +33 (0)4 50 96 03 60

acropole@acropole.fr
www.acropole.fr